

140*100mm

Specification

FM Tuner Section

Tunning Range 87.5-108.0 (Europe / China);
87.5-107.9 (U.S.A)
IF Range 10.7MHz
Usable sensitivity 15dB
Signal-to-noise Ratio 50dB
Stereo Separation 30dB (1KHz)
Frequency Response 30-15KHz

General

Power Requirements DC10V-14.4V
Load Impedance 4Ωx2
Max.Power Output 45Wx2
Tone Controls +/-8dB (Bass 100Hz , Treble10KHz)
Dimensions Approx:192x178x50mm (DxWxH)
Mounting Dimensions Approx:169x182x53mm (DxWxH)
Weight Approx:1.75kg

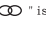
CD Deck Section

Discs Played MP3/CD/Picture-CD
Mounting Angle 0 to +/-30°

Audio Section

Maximum Output level 2Vrms (+/-3dB)
Frequency Response 20Hz to 20KHz
Signal-to-noise Ratio 60dB
Separation 30dB

Simple trouboeshooting guide

Problem	Cause/Solution
No power	★ Check and make sure whether the fuse is blown. Replace with a new one if necessary.
Some errors occur in the LCD or no function When pressing the button.	★ Press the RESET button.
Unable to receive radio stations.	★ Check and make sure whether the antenna is Inserted or the antenna is properly connected. Insert the antenna or connect it properly.
Poor effect on receiving.	★ Antenna may not be fully extended. Fully extend the antenna or replace a new one if it is broken. ★ The broadcasting signal is too weak. ★ The antenna is poorly grounded check and make sure the antenna is properly grounded at its mounting location.
Cds can not be loaded.	★ Check if there is a mechanism problem or if there is already a CD in it.
The stereo indicator"  " is flashing	★ Tune frequency inaccurate. ★ The broadcasting signal is too weak. (Set to the MONO mode)
noise	★ The CDs is dirty or damaged.

★ Note:If any of the problem persist after check list had been made,consult your nearest service dealer. Never attempt to disassemble your unit by yourself.

Thank you for using our company multimedia player!

To operate the unit correctly, please read the owner's manual carefully before using the unit. Keep these instructions and retain this booklet for future reference.

CONTENTS

Welcome! -----	1
Notes on Installation -----	2
Front panel -----	3
Bluetooth operation -----	3
CD-MP3 operation -----	4-5
Remote Control -----	6
Connecting Wires to Terminals -----	7
Simple troubleshooting guide -----	8

Notes on installation

The unit is designed for 12V DC, negative ground operation system only. Before installing the unit, make sure your sauna is connected to DC 12V negative ground electrical system.

The negative battery terminal must be disconnected before making connections, which can reduce damaging the unit due to short circuit.

Be sure to connect the color-coded leads correctly according to the diagram. Incorrect connections may cause the unit malfunction or damage the sauna's electrical system.

Be sure to connect the speaker(-) leads to the speaker (-) terminal. Never connect the left and right channel speaker cables each other or to the vehicle body.

Precautions

This unit can play the following discs only:

Type of disc	Label on the disc	Recorded materia	Size of disc
MP3	MP3	Sound only	12cm
CD	disc	Sound only	12cm

Note: The unit is compatible with CD/MP3 version Disc With USB/USB2.0/MMC/SD card

Do not attempt to modify the unit, modifying the unit may cause an accident.

Do not work in extreme high or low temperature. Recommended temperature is between +60°C and -20°C.

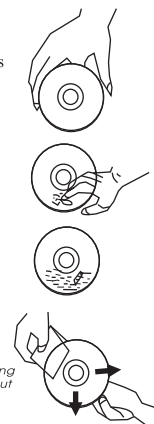
To enjoy optimum sound and images while playing, handle the discs as follows:

-----Handle the disc by its edge to keep the disc clean, and do not touch the surface.

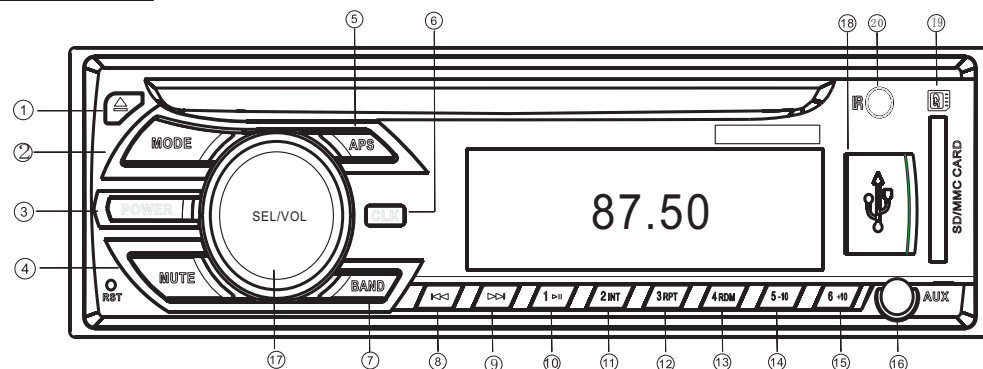
-----Do not use your CDs with paste residue or ink attached

-----Do not use CDs with labels or stickers attached, which may leave a sticky residue while beginning to peel off (Shown as picture)

-----Clean the discs with an optional cleaning cloth. Wipe each disc from the center out (Shown as picture)



front panel



- | | | |
|----------------|-----------------|---------------------------|
| ① Eject Button | ⑦ Band Button | ⑭ ⑮ Number Button |
| ② MODE Button | ⑧ PREV | ⑯ AUX in |
| ③ Power Button | ⑨ NEXT | ⑰ SEL / VOL button |
| ④ Mute Button | ⑩ Play/pause | ⑱ USB Card port |
| ⑤ A. PS Button | ⑪ INT button | ⑲ SD Card port |
| ⑥ Clock Button | ⑫ Repeat Button | ⑳ Remote Control Receptor |
| | ⑬ Random Button | |

Bluetooth operation

1. Press MODE key switch into the bluetooth MODE NO LINK
2. Open the phone bluetooth search this machine (BT-100) to connect bluetooth device; LCD screen display the LINK OK, said after the connect bluetooth connected at this time You can play favorite music on your phone.

- ① Eject Button press this button ▲ to eject the disc.
- ② MODE Button Press mode to Play radio or disc → RADIO → PLAY → AUX →
- ③ Power Button Press power button to switch power.
- ④ Mute Button Press the button to mute or unmute.
- ⑤ AP. S Button Press this button to search each stored stations. When AMS mode is carried out, INT appears on display. You can press number button 1-6 or APS button to select stored stations. Press and hold APS button to store a station in any of the number from 1-6.
- ⑥ Clock Button Press the button and the current time will be displayed and returned to previous status in 5 seconds. Press and hold the button until the Hour or Minute digital flash, then press VOL button adjust time. Press Clock button again to confirm your adjustment.

- ⑦ Band Button Press the button repeatedly to select bands in the following order.

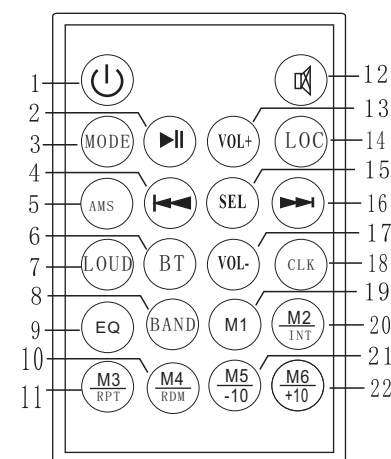


- ⑧ SEEK+ ◀ UP Automatic Tuning: Press ⑧ ⑨ (UP or DN) button continuously to search automatically.
- ⑨ SEEK- ▶ DN select a station upward or downward respectively.
Manual Tuning: Press and hold ⑧ ⑨ (UP or DN) button for more than 3 seconds, the radio automatically searches a station upward or downward respectively and plays when a station is received.
- ⑩ play/pause button Role play or pause function.

- ⑪ INT button During play back , press “**INT**” button , one of the number button 11 to play the first 10 seconds of each track on the disc , the display will show “**INT** , track number and elapsed time ” (See the picture) , which indicates **INT** function is already activated . Press “**INT**” button once more to revert to normal play back .
- ⑫ RPT button Press 12 “**RPT**” button to perform repeat playing function when you need to repeat playing the track you like . in mp3, cd version, Press “**RPT**” button at the first time “**RPT**” appears (Shown as track) , which indicates repeat playing one track starts . Press “**RPT**” button again to stop repeat .
- ⑬ RDM button During playback , press 13 **RDM** button , and “**RDM**” appears on the display (See the picture) , which indicates **RDM** function is carried out . The unit plays any track at random . Press **RDM** once more to return to normal playback mode .
- ⑭ 5-10 button/minus -10 songs directly
- ⑮ 6+10 button/minus +10 songs directly
- ⑯ AUX IN When you Insert Audio frequency data line with AUX jack, the Audio frequency Signal will be imported, the sound Enlarge signal.
- ⑰ SEL/Volume Button Press this button you can adjust the volume Strong or weak Repeatedly press ⑰ (**SEL**) button to select the desired mode in the following order: → VOL → BAS → TRE → BAL → FAD → EQ → LOUD OFF →
- ⑱ USB When you connect mini USB or SD card, the system automatically play
- ⑲ SD it. You can select track in it with (SEEK-SEEK) button. Press mode button to return to other mode.
- ⑳ IR Remote Control Receptor
- ㉑ RESET button 1 Operating the unit for the first time Or after replacing the battery you must reset the unit .Press (**RES**) Button with a pointed object to set the unit to initial procedure.

Note: When some errors occur in the LCD display, you can also press RESET button to resume to normal, and it will erase the clock setting and some memorized functions.

Operations of Remote Control



(optional)

1. Power Button
2. Play and pause Switch
3. Mode Switch
4. Turning/selecting Tracks(up)
5. Automatic memory/Browse
6. Stereo/Single sound/ track switch
7. Tuning Loudness ON/OFF
8. Band selector
9. EQ
10. Number Button/RDM
11. Number Button/RPT
12. Mute Button
13. Volume control(UP)
14. LOC
15. Selector button
16. Turning/selecting Tracks(Down).
17. Volume control(down)
18. Clock Button
19. Number Button
20. Number Button/INT
21. Number Button/-10
22. Number Button/+10

Connecting Wires to Terminals

- ModeI No:CD/MP3

Frequency range
FM:87.5-108MHz
Speaker impedance:
4-8ohms

Note:
Incorrect wiring
may damage the
machine

Serial I No:

Connecting Wires to Terminals

- Mode I No: CD/MP3 Serial I No:

Frequency range
FM: 87.5-108.0MHz
Speaker impedance:
4-8ohms

Note:
Incorrect wiring
may damage the
machine

Wiring diagram showing connections for the front speakers and antenna. The diagram includes a 10-pin connector with pins labeled 2, 1, 6, 8, 10, 1, 4, 3, 5, 7, 9. Wires connect these pins to the speakers and antenna. The antenna is labeled ANT. The speakers are labeled Front Lch Speaker and Front Rch Speaker. The wiring is color-coded: White, White/Black, Grey, and Grey/Black. A note indicates that incorrect wiring may damage the machine.

图2